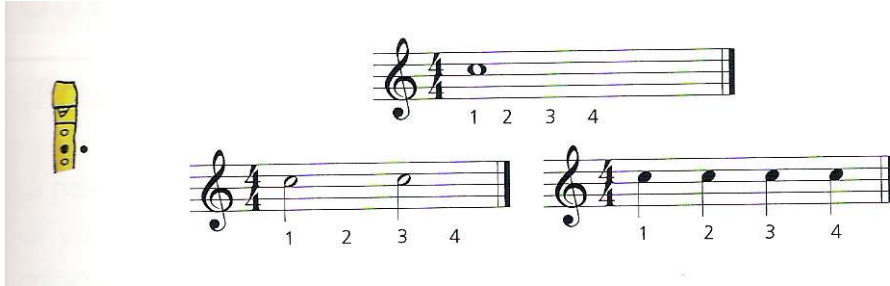


POSICIONES DE LA FLAUTA: DO agudo

Practica este nuevo sonido:

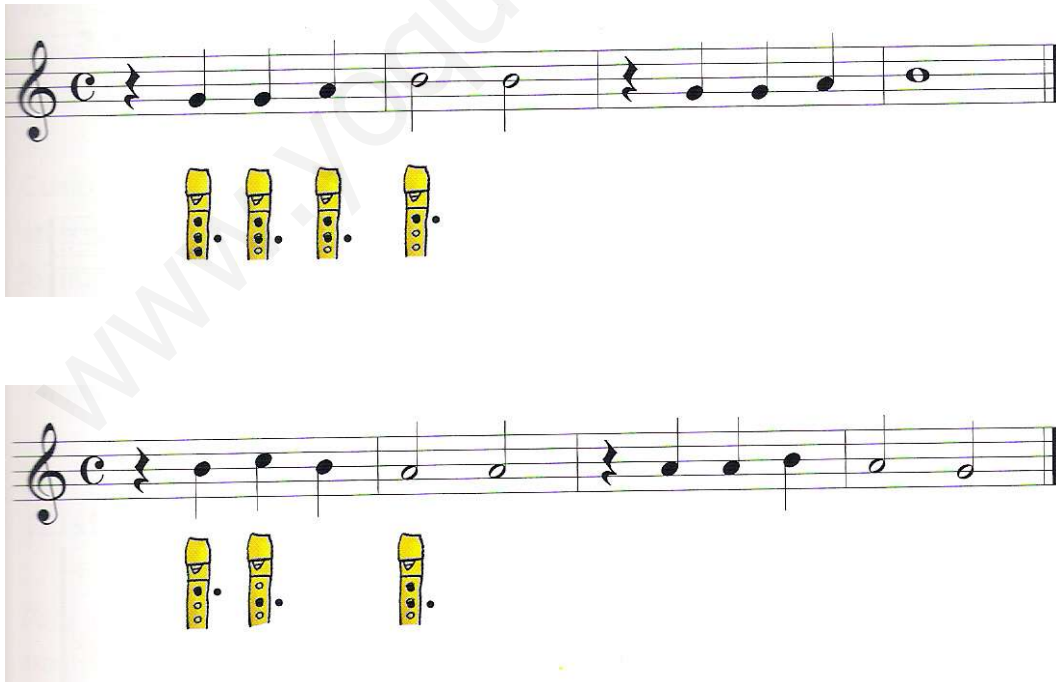
Nota DO agudo



The image shows three musical staves in 4/4 time, each with a single note on the second line (D5). The first staff has a whole note with fingerings 1 2 3 4 below it. The second staff has a quarter note with fingerings 1 2 3 4 below it. The third staff has a quarter note with fingerings 1 2 3 4 below it. To the left of the staves are three diagrams of a flute showing the fingerings for the sharp D note: the first hole is covered by the index finger, the second by the middle finger, the third by the ring finger, and the fourth by the pinky.

EJERCICIO 8

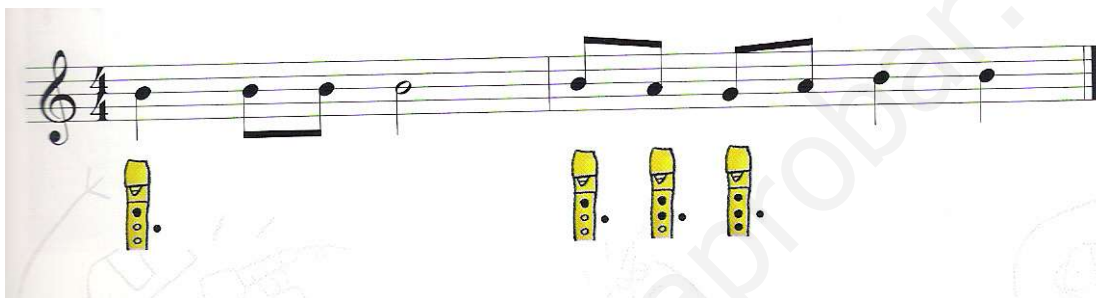
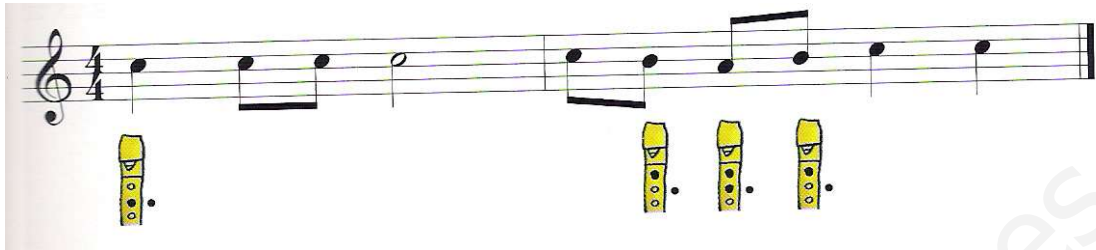
Practica ahora los dos fragmentos de esta canción. Si es necesario marca los pulsos con el pie. Toca cada sonido con la duración que le corresponde.



The image shows two musical staves in common time (C). The first staff contains a sequence of notes: a quarter rest, a quarter note on the second line, a quarter note on the second space, a quarter note on the second space, a half note on the second space, a quarter rest, a quarter note on the second space, a quarter note on the second space, a quarter note on the second space, and a half note on the second space. Below this staff are four flute diagrams showing fingerings for the notes: 1 2 3 4, 1 2 3 4, 1 2 3 4, and 1 2 3 4. The second staff contains a sequence of notes: a quarter rest, a quarter note on the second line, a quarter note on the second space, a quarter note on the second space, a half note on the second space, a quarter rest, a quarter note on the second space, a quarter note on the second space, a quarter note on the second space, and a half note on the second space. Below this staff are three flute diagrams showing fingerings for the notes: 1 2 3 4, 1 2 3 4, and 1 2 3 4.

EJERCICIO 9:

Para tocar esta canción no necesitas aprender ningún sonido nuevo. Practica varias veces cada fragmento.



EJERCICIO 10:

Repite varias veces este ejercicio. Luego interpreta la PAJARILLO TRISTE. Intervienen las notas LA, SI y DO'.

 **PAJARILLO TRISTE**
V. Gil



EJERCICIO 11

Antes de tocar la pieza, repite varias veces este ejercicio. Luego interpreta el fragmento de BLACK AND WHITE (V.Gil). Intervienen las notas SOL, LA, SI y DO'

BLACK AND WHITE
V. Gil

EJERCICIO 12

Inventa una melodía en la que utilices las notas estudias hasta ahora (SI, LA, SOL y DO'). Utiliza el compás de 2/4 y estas figuras: 1 blanca, 2 negras o 4 corcheas. Utiliza también silencios de negra. Interpreta tu melodía.

Three blank musical staves with treble clefs, intended for the student to write their own melody.